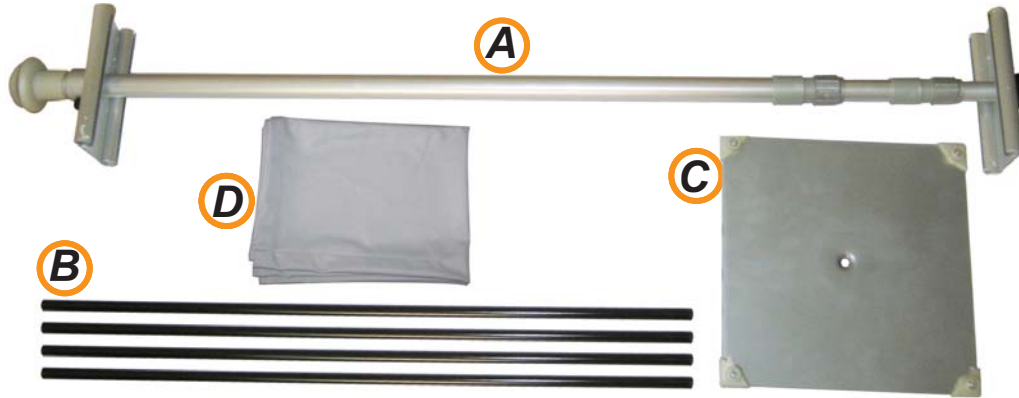


# NEW HEAVY DUTY STAND

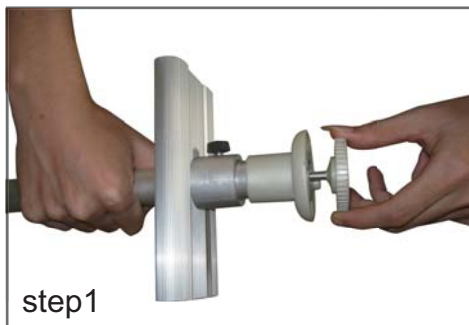
## ACCESSORIES



### Parts List:

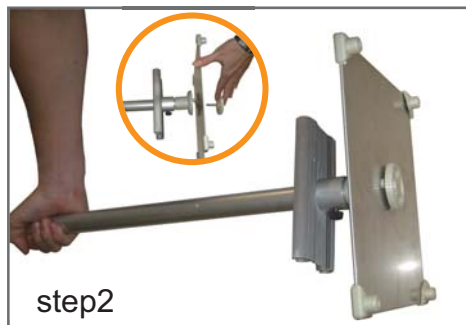
- A. 1x Upright Pole
- B. 4x Hanging bars
- C. Base
- D. Graphic(s)

## HOW TO INSTALL



step1

Loose the screw out from the bottom of Upright Pole (A).



step2

Fix the Base (C) & Upright Pole(A) together by this screw, and hand tight.



step3

Slide the Hanging bar (B) into the top and bottom pole pocket of the Graphic (D).\* 2pcs Hanging bars for each graphic.



step4

Loose the thumb screw out from the top of Upright Pole (A), then adjust the height.



step5

Pick up the installed graphic, and slide the Hanging bars (B) into the metal boards.



step6

Adjust the bottom metal board, straightened the Graphic (D).



step7

Repeat the steps as above for another side of graphic.

Finally, a great indoor display stand with impact graphic in front of you!