

# Magnetic Pop Up Displays To Install

## Accessories

- ① Aluminum Pop up Frame x 1
- ② Fabric Panels/ Graphic Panels
- ③ Magnetic Channel Bars (10ft-21pcs, 9ft/8ft -18 pcs)
- ④ Lights x 2
- ⑤ Power cord x 2
- ⑥ Light connectors x 2



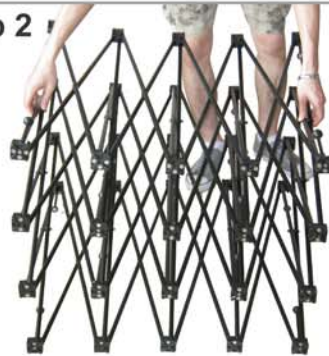
## How to install

step 1



Remove frame from bag.

step 2



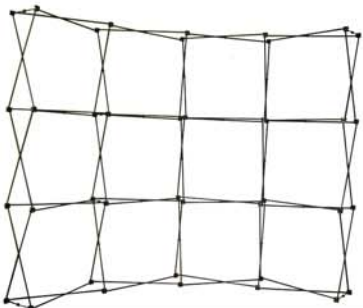
Lay down the frame, and lift frame up to full height until it is completely open.

step 3



Once the frame is open, join together all the connectors on the frame.

step 4

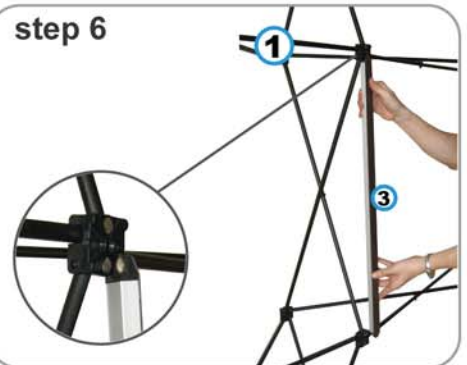


step 5



Take out the Magnetic Channel Bar from bag

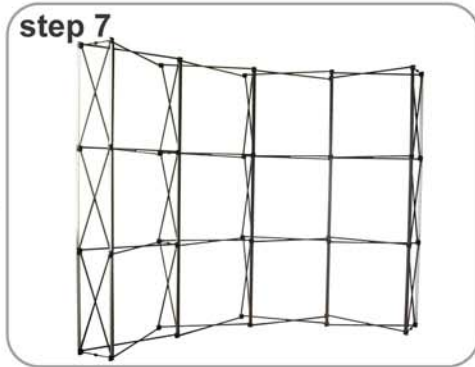
step 6



Pick up the channel bar, and install on the frame. Repeat step for all channel bars.

# Magnetic Pop Up Displays To Install

After install the channel bars, the frame is more steady.



Unfold the Fabric Panels/ Graphic Panels, and keep them flat on the cleaning floor / desk.

step 8



Hang the central panel on the top hub and channel bar. Curve panel slightly towards you, make sure the magnet on the hanging hardware meet the magnet on the top hub.

step 9



Starting from top, smooth each panel down. Ensure the magnetic strips are properly aligned.

Hang the end caps on the top hub, wrap it around the side and attach rear back at top. Smooth both sides downwards at once, aligning magnetic strips.



step 11



Patted the bottom of fabric / graphic, make it properly natural curved.

step 12



step 13



Slip the bottom of light into the light connectors.

step 14



Attached the light connectors on the top of frame, and fix the power cord on the light.

step 15



Repeat for another light.

step 16



A great pop up display shows in front of you now!

## DISMANTLE:

Remove fabric/graphic panels. Before collapsing frame, take off all the channel bars and lights, the frame will fold up automatically.